

*We Think of Human,
Environment and Future*

MADE IN KOREA

Coway Co., Ltd.

Coway

Water Filtration System **CHP-06ER/L**

- This product can not be used if the voltage is different from that mentioned in the rating plate.
- For the right operation of Coway Water Filtration System read this manual.



The Letter of Guarantee is enclosed here with this Coway product realizing "Quality is the best policy".

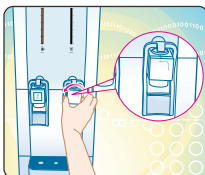


FEATURES

» Coway Water Filtration System has differentiated function.

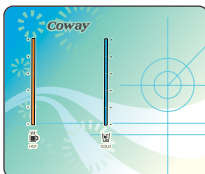
1 Cold/Room Water Changeover Faucet

Is easy to use by adopting changeover faucet which makes it possible to select cold water or room water.



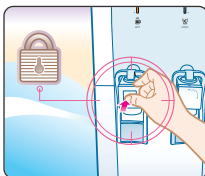
2 Temperature and Operation Display

It is easy to see the operation condition of the product including cold/hot water and temperature.



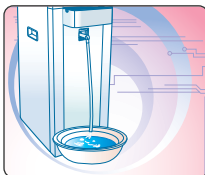
3 Hot Water Safety Faucet

Prevents a burn caused by hot water with equipped safety device.



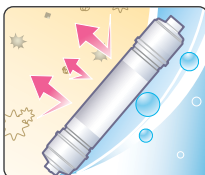
4 Convenient Draining System

Adds convenience by draining hot water on the front of product without movement through "Front Draining Door".
(Drain after turning the cold/room water changeover faucet to the left and lifting cup-touch lever to drain cold water.)



5 Prevention of Fine Dust

By using "Fine Post-Carbon Filter", it diminished the fine dust which can be flowed into the water tank.



DEAR CUSTOMERS



First of all, we would like to thank you very much for purchasing this Coway water filtration system. This product is superior to the ones in the past in function and we believe that it will provide you with cleaner and healthier water. We would like to recommend you to read this User's Manual carefully for proper operation and maintenance and keep this manual well together with the warranty. This user's manual could solve your problem so that you can easily fix by yourself in just a few minutes.

This system (CHP-06ER/L) conforms to NSF/ANSI 58 for the reduction of Pentavalent Arsenic, Barium, Cadmium, Mercury, Selenium, Radium 226/228, Trivalent chromium, Hexavalent chromium, Lead, Nitrate/Nitrite as verified and substantiated by test data. This system (CHP-06ER/L) conforms to NSF/ANSI 42, 53 for the reduction of Chlorine and VOC as verified and substantiated by test data. This system is acceptable for treatment for influent concentrations of no more than 27mg/L nitrate and 3mg/L nitrite in combination measured as N and is certified for nitrate/ nitrite reduction only for water supplies with a pressure of 280kPa(40psig) or greater.

Contents

For information	How to use
Safety Information 04	Please Keep in Mind 13
- Electricity Safety 04	Preparations 16
- Installation Safety 06	Operation Part/Indication Part 17
- Operation Safety 07	How to Operate 19
- Others 08	- To drink cold water 19
Names of Each Part 10	- To drink hot water 19
Water Filtration Process 12	- To drink room water 20
Installation and cleaning	Others
Installing Method 21	Before Asking A/S 29
Cleaning Method 23	Specification 31
- Inside water tank 23	Water Flow Diagram 32
- Gutter 26	Warranty Information 33
Filter Replacement and Daily Check ... 27	

※ Please keep the manual near your sight and in the reach of your hand.



SAFETY INFORMATION



Be careful to keep this safety information.

Please read this information to prevent property loss and ensure your safety.



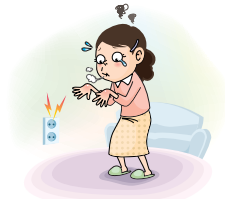
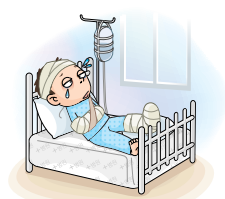
Danger If not observed, serious injury or even death could occur.



Warning If not observed, serious injury or property damage could occur.



Caution If not observed, slight injury or property damage could occur.

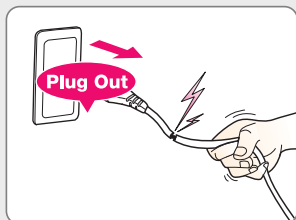


Electricity Safety



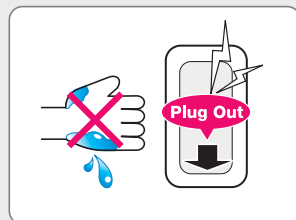
Do not use a damaged power cord or plug, and loose outlet.

Electrical shock or fire may occur as a result.



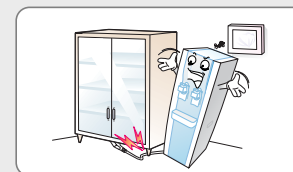
Do not unplug by pulling the cord or handle the plug with wet hands.

Electrical shock or fire may occur as a result.



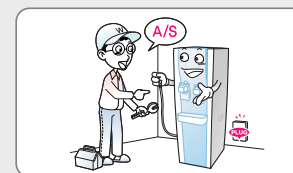
Do not run the power cord under a heavy object to prevent it from being damaged.

Electrical shock or fire may occur as a result.



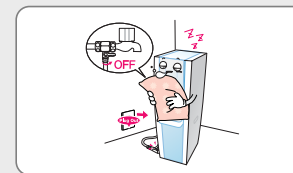
Unplug the unit before repair, inspection, or replacement.

Electrical shock may occur as a result.



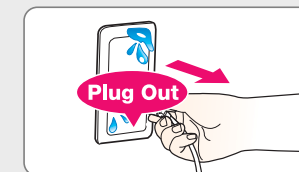
Close the main water supply valve and unplug the power cord when not using for a long time.

Electrical shock or fire may occur as a result.



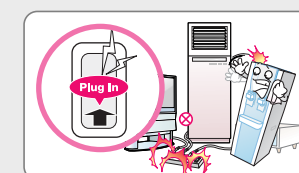
If the cord or plug is wet, unplug the unit and let it completely dry before subsequent use.

Electrical shock or fire may occur as a result.



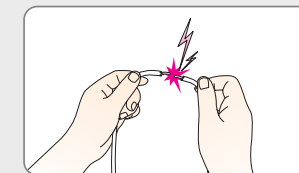
Do not plug into an outlet or power strip that is being used by several other appliances. Use a separate outlet for the unit.

Fire may occur as a result.



Do not attempt to repair the power cord.

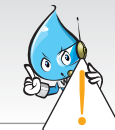
Electrical shock or fire may occur as a result.





SAFETY INFORMATION

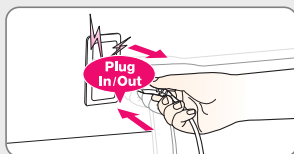
Please read this information to prevent property loss and ensure your safety.



Electricity Safety

- ⚠ Do not repeatedly plug and unplug the unit from the electrical outlet.

Electrical shock or fire may occur as a result.

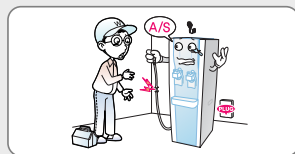


- ⚠ Remove any dust or water if it's on the plug.
*Never use Benzene or gasoline to clean the plug.

Electrical shock or fire may occur as a result.

- ⚠ Do not use if the cord appears to be damaged. Please ask Customer Service to replace the cord.

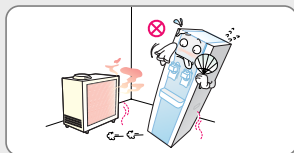
Electrical shock or fire may occur as a result.



Installation Safety

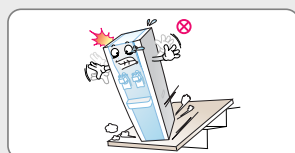
- ⚠ Do not install the unit near heaters.

Electrical shock or fire may occur as a result.



- ⚠ Use or place the unit on a level area and do not apply force to the unit.

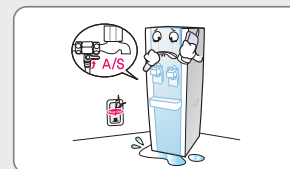
Injury to the user or damage to the unit could result.



Operation Safety

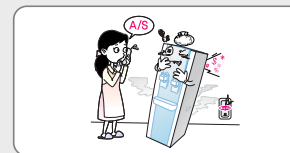
- ⚠ Close the main water supply valve and plug out, then call to A/S center in the case of any water leakage from the product.

Electrical shock may occur as a result.



- ⚠ Immediately unplug and call the Customer Service center if the unit makes a strange noise or odd smell.

Fire may occur as a result.



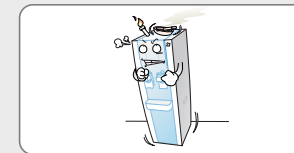
- ⚠ Do not place dishes or containers of water, drugs, food, or small metal objects on top of the product.

Danger of electric shock, fire, or product damage if water or alien substances get into the product.



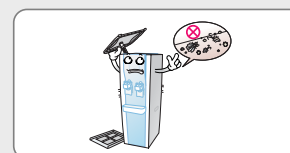
- ⚠ Do not put a candle, cigarette or any other flammable object on it.

Fire may occur as a result.



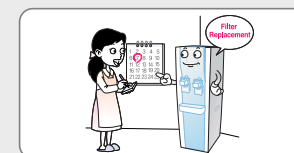
- ⚠ Please use after completely closing the cover of the water tank in the product.

Bugs or other substances might get inside the product.



- ⚠ Periodical filter replacement is prerequisite for getting clean water.

In case filters are overused, the performance of filters is deteriorate.





SAFETY INFORMATION

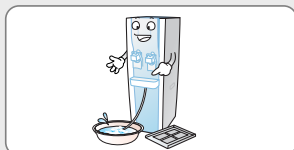
Please read this information to prevent property loss and ensure your safety.



Operation Safety

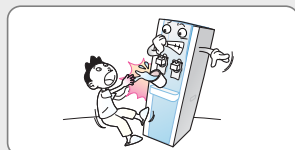
- ⚠ When water is stored or the product is not in use for a long time, drain all the water in the storage tank before use.

Stored water may get contaminated.



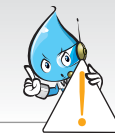
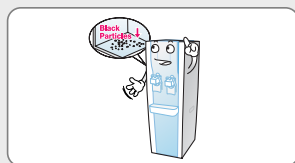
- ⚠ Be careful not to get burned by the hot water while extracting or draining.

Get burned may occur as a result.



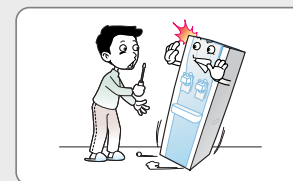
- ⚠ When moving the product or replacing the fine post-carbon filter there may be black residue particles under the tank bottom stored water may get contaminated.

Certain level of fine dust may be introduced to silver coated activated carbon that is used to the fine post-carbon filter to enhance the taste of water; thus, it is harmless to human body.



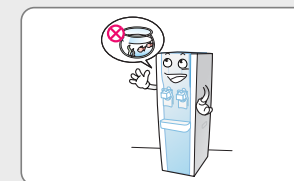
- ⚠ Do not repair, disassemble, or modify.

Electrical shock or fire may occur as a result.

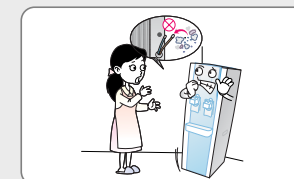


- ⚠ Do not use filtered water for the water exchange of an aquarium or a fishbowl.

Certain fish may die as a result.



- ⚠ The filtration system installation shall comply with state and local laws and regulations. Do not use with water that is microbiologically unsafe or of unknown quality without adequate disinfection before or after the system.



Others

- ⚠ Do not carry the unit by its power cord.

Electrical shock or fire may occur as a result.



- ⚠ Do not spray water or wipe them with benzene when cleaning.

Electrical shock or fire may occur as a result.

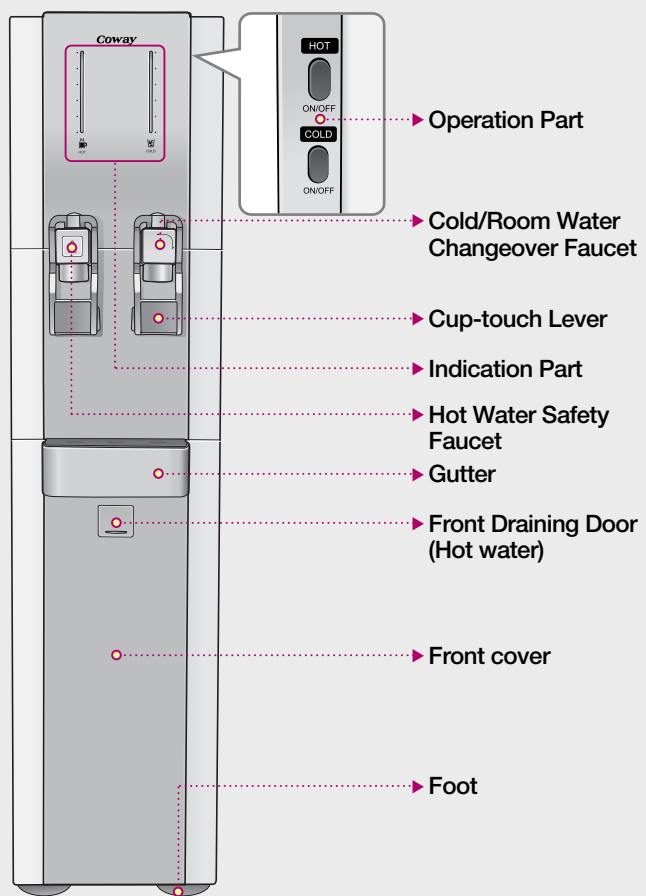




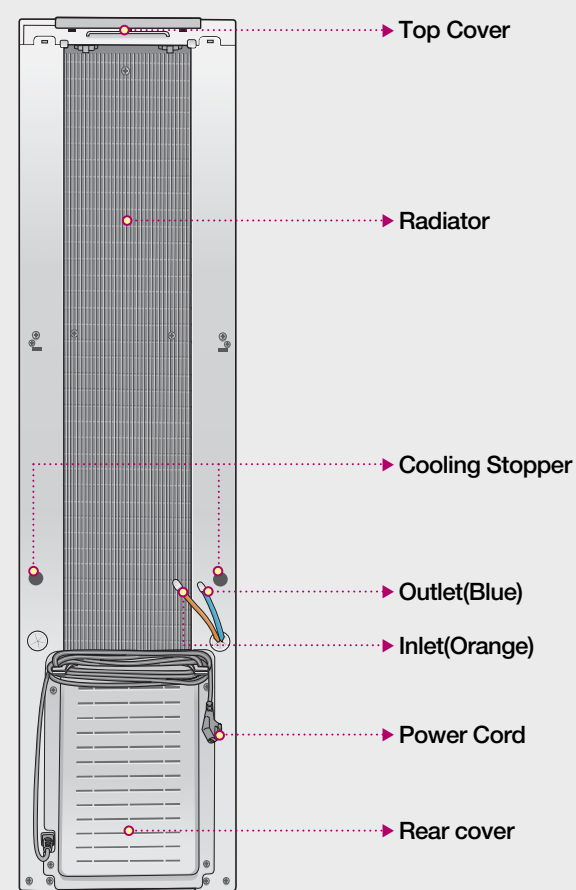
NAMES OF EACH PART



Front



Rear





WATER FILTRATION PROCESS

The filter is the core technology of the filtration system. If you don't use qualifying filter or if you use an old filter that has expired, the system performance may degrade.

► The 6-step water filtering system (CHP-06ER/L)

1 NEO-SENSE FILTER

Reduces various foreign bodies that come from the feed water pipe such as dirt, sand, rust particles, VOCs and chlorine.

2 MEMBRANE FILTER(RO)

The RO(Reverse Osmosis) Membrane filter reduces Pentavalent Arsenic, Barium, Cadmium, Mercury, Selenium, Radium 226/228, Trivalent chromium, Hexavalent chromium, Lead, Nitrate/Nitrite. The influent water to the system shall include the Following characteristics.

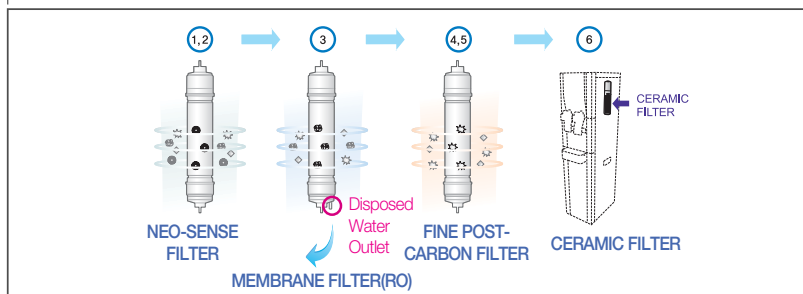
- No organic solvents · Chlorine : < 2 ppm · pH : 7-8 · Temperature : 41~95 °F(5 ~ 35 °C)
- Iron : < 2 ppm · Turbidity : < 1 NTU · Hardness : < 1000 mg/L

3 FINE POST-CARBON FILTER

It is a composite filter. The post-carbon filter removes odor of water and improve water taste. And the filter sensor eliminates the dust particles in the post-carbon filter.

4 CERAMIC FILTER

Restrains propagation of the microorganism inside water tank and enhances sanitation.



⚠ WARNING

The disposed water shall be used for cleaning a toilet, a house, dishes, and as water for sundry uses. However, please do not use it for potable water or cooking water.



This system conforms to NSF/ANSI 58 for the reduction of Pentavalent Arsenic, Barium, Cadmium, Mercury, Selenium, Radium 226/228, Trivalent chromium, Hexavalent chromium, Lead, Nitrate/Nitrite as verified and substantiated by test data.

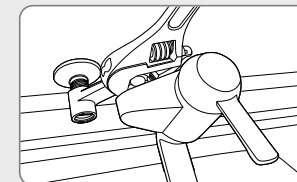


PLEASE KEEP IN MIND



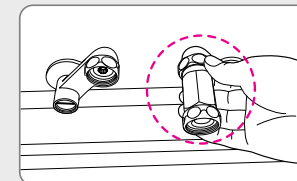
► The summary for the proper installation of the water filtration system

- 1 Close main water supply valve to separate the faucet.



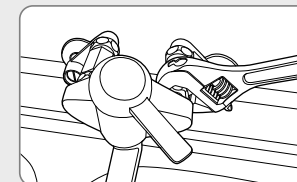
- 2 Wind the teflon tape on the adaptor and fit it to the pipe.

⚠ Do not turn the water pipe.



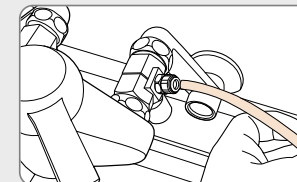
- 3 Connect the faucet with the adaptor.

⚠ Shall install the adaptor with connector on the cold water pipe.

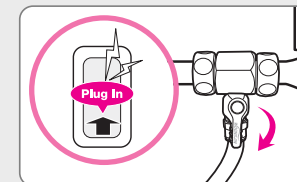


- 4 Connect 1/4 inch orange tubing with the connector on the adaptor.

⚠ Flush water through each filter at least 5 minutes before Connection



- 5 Connect it to voltage rating that matches it on the rating plate. Then, open the feed valve to supply water to the filtration system.





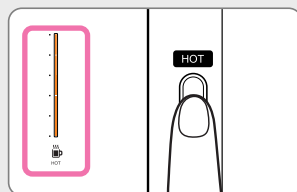
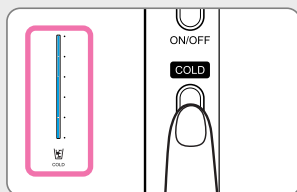
PLEASE KEEP IN MIND



► The summary for the proper use of the water filtration system

1 When using Cold/Hot water turn on the Cold/Hot water function.

To drink Cold/Hot water the Cold/Hot water function should operate. Please check if the Cooling/Heating mode indicator lamp is on (See P18).



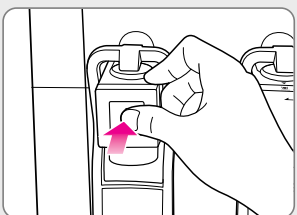
2 Select cold water mode selection button to drink cold water and check the operation condition of the cooling mode indicator.

When the cold water temperature indicator on the indication part is on, turn the cold/room water changeover faucet to the left and push the cup-touch lever and you may drink cold water (See P19).



3 To drink hot water select hot water mode selection button and check the operation condition of heating mode indicator.

When the hot water temperature lamp on the indication part is on, push the hot water cup-touch lever and push down safety button and you may drink hot water (See P19).



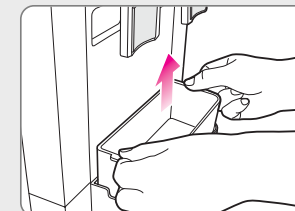
4 To drink room water.

Turn the cold/room water changeover faucet to the right and press the cup-touch lever of the cock to extract room water (See P20).



5 Empty the gutter regularly.

Empty the gutter regularly so that it does not overflow (See P26).



6 Regular filter replacement and management is needed.

To drink clean water, clean and replace filter regularly. Replace filter at the estimated time of filter replacement (See P27).



PREPARATIONS



OPERATION PART /INDICATION PART



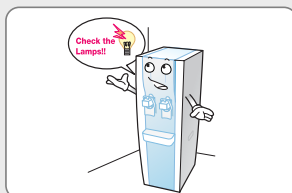
► Please check before use

- ⚠ Connect it to voltage rating that matches it on the rating plate.**
Then, open the feed valve to supply water to the filtration system.



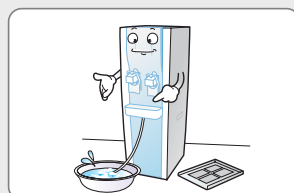
■ When the lamp on the indication parts are turned out

When the lamp on the indication parts are turned out please check the reason for break of electric supply in case of electricity failure or other conditions.



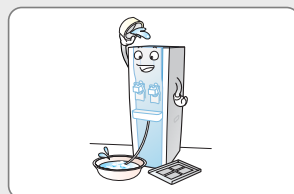
■ After installation

Use after throwing away the water in the water tank up to full level more than twice.



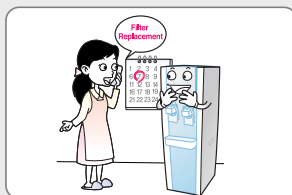
■ In case of no service for a long time

In case of no service for a long time, completely drain the water from the tank. Next, fill and empty water again. And use the product.



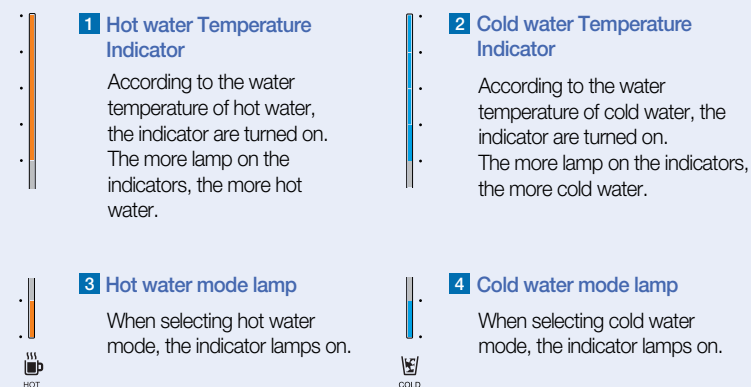
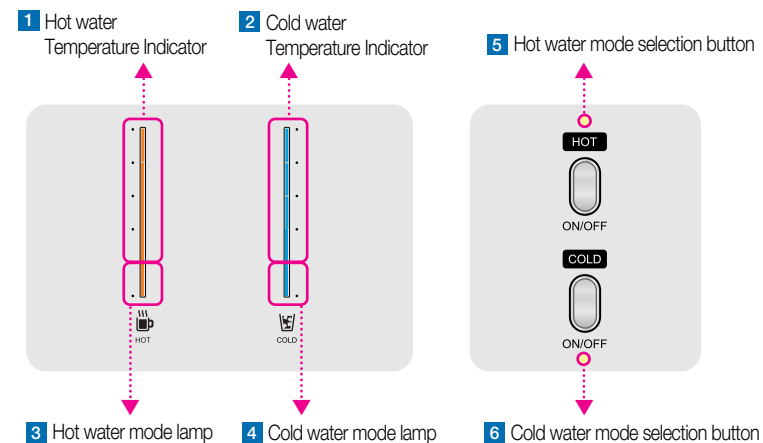
■ Regular filter change

The regular filter change is very important to have clean water. The filter after life is ended may degrade the performance. Thus, do not miss the time for the filter change.



When not using for a long time please lock the main water supply valve and plug out the power cord.

► Operation Part/Indication Part





OPERATION PART /INDICATION PART



HOW TO OPERATE



► Operation Part/Indication Part

HOT

5 Hot water mode selection button



When using hot water select hot water mode selection button and check if the hot water mode lamp goes on.

COLD

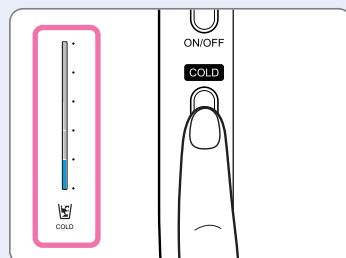
6 Cold water mode selection button



When using cold water select cold water mode selection button and check if the cold water mode lamp goes on.

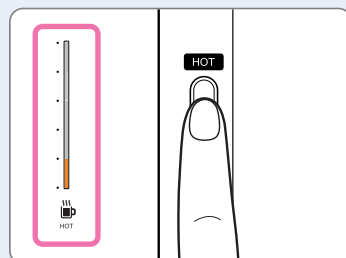
■ To use cold water

Press the cold water mode selection button, check if the cold water mode lamp goes on.



■ To use hot water

Press the hot water mode selection button, check if the hot water mode lamp goes on.

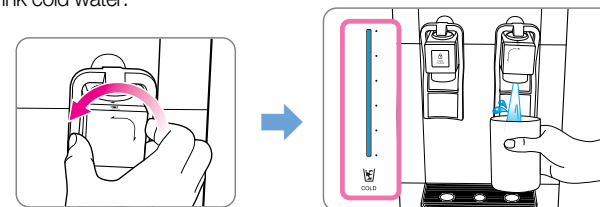


※ To select the mode of HOT/COLD, press each button for more than 2 seconds, and then the lamps of the mode indicator for cold and hot water are either turned on or off.

► To drink cold water

Press the cold water mode selection button and check the cold water mode lamp of it operation condition.

When the cold water temperature indicator at the indication part is on turn the cold/room water changeover faucet to the left and push the cup-touch lever and you may drink cold water.

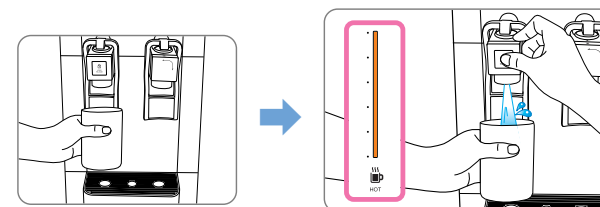


TIP When the cold water does not extract from the filtration system please check if the cooling mode indicator is on (See P19).

► To drink hot water

Press the hot water mode selection button and check the hot water mode lamp of it operation condition.

When the hot water temperature indicator at the indication part is on push the cup-touch lever of hot water and push safety button and you may drink hot water.



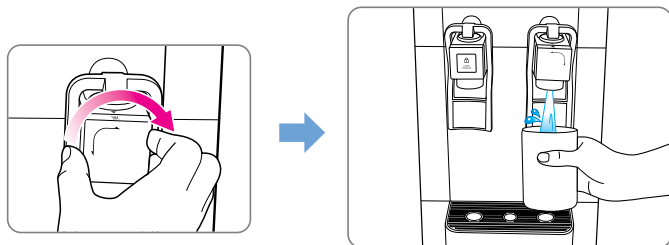
TIP When the hot water does not extract from the filtration system please check if the heating mode indicator is on (See P19).



HOW TO OPERATE

► *To drink room water*

Turn the cold/room water changeover faucet to the right and push the cup-touch lever and you may drink room water of your desire.



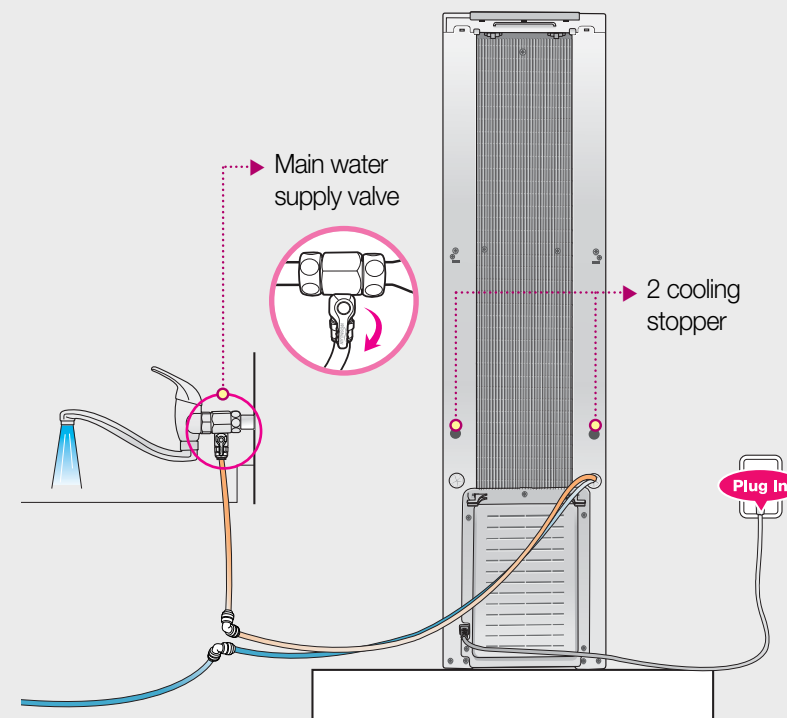
The influent water should not include any organic solvents because they may damage RO membrane polymer and may decrease the performance of RO membrane.



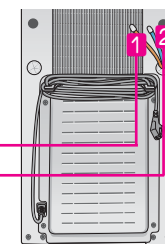
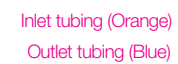
INSTALLING METHOD



► *Follow the instruction for installation*



- Connect the orange color inlet tubing **1** to the tap water supplying pipe. Connecting the outlet tubing **2**.



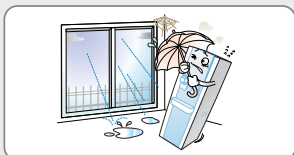


INSTALLING METHOD

⚠ Be cautious

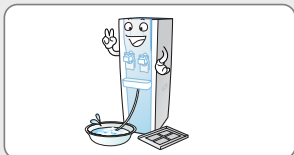
■ Installation place I

When installing avoid bumpy areas, damp areas, and area in the reach of direct sunlight, dusty areas, water splashing areas.



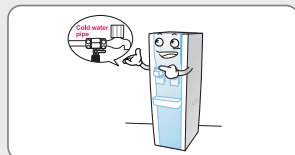
■ After installation

After installing use after throwing away room water more than twice.



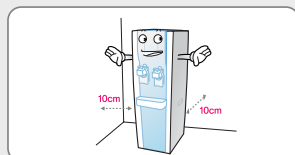
■ Cold water pipe

Always connect to the cold water pipe. (When it is connected to hot water pipe the filter of the Water Filtration System may get damaged)



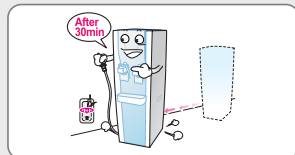
■ Installation place II

Have 10Cm space between the wall and the product and install above the floor where it is solid and flat.



■ Moving and installation.

When moved, connect the power cord after 30minutes of installation.



■ To secure the optimum performance of the product, consult with an installation expert for further installation. -Service center : 213-480-1600

■ Residuals may be left inside the filter which is used during the process of inspection when the product was manufactured.
- It is not used product so feel safe to use them.

⚠ Do not use the main water supply valve or hose again that is used before when installing the product.

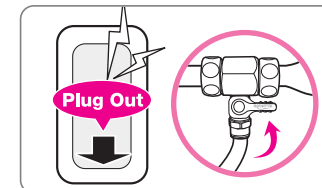


CLEANING METHOD



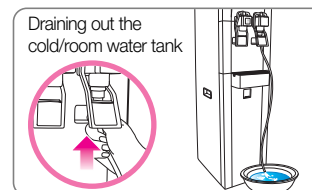
► Inside water tank

- 1 Press the cold/hot water selection switch on product front for 2 seconds to turn off, and close the main water supply valve, and pull off power cord.

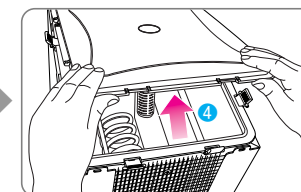
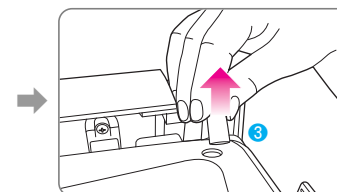
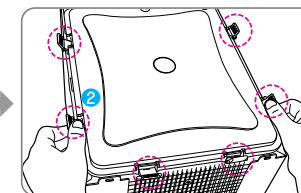
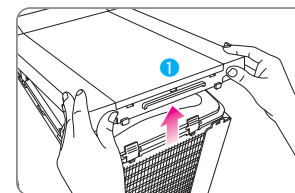


- 2 Drain all the water in the storage tank by using the drain hose.

※ Extract the cold/room water in the water tank through the tap of the cold/room water faucet and empty the water in the hot water tank through the front drainage.

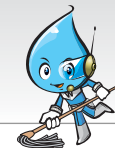


- 3 Open the top cover of the product pulling upward and open the sealing clips (6 areas) of the water tank. Then take out the hose and open the cover of the storage tank.



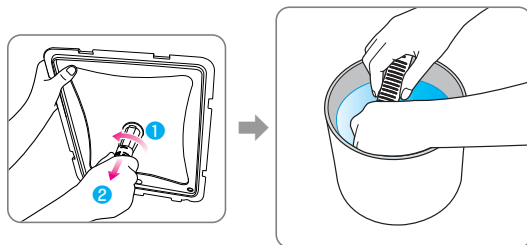


CLEANING METHOD

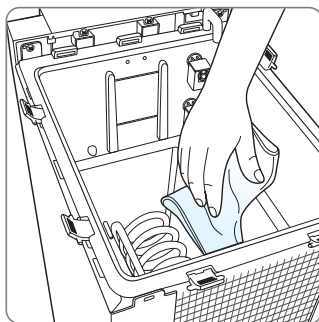


► Inside water tank

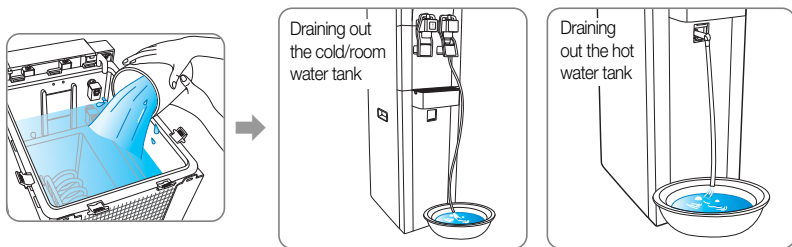
- 4 Separate the ceramic filter from the bottom of the storage tank cover and clean it into room water.



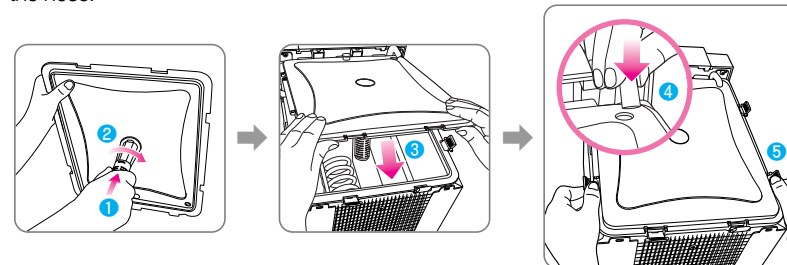
- 5 Wipe the inside of storage tank with a soft cloth.



- 6 Wash out the storage tank with the reserved water and drain it through the drain hose.

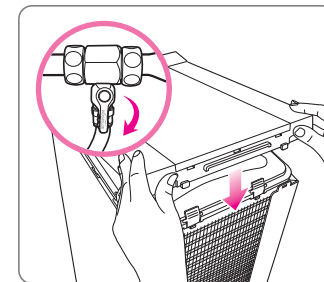


- 7 After installing the ceramic filter on the lower part of the storage tank cover, close the sealing clips (6 areas) of the storage tank. Close the water tank cover after inserting the hose.



- 8 Close the top cover and then connect the power cord before opening the main water supply valve. After checking water extraction from the faucet of the cold/room water and hot water, **press the cold/hot water selection switch in front of the product for 2 seconds for re-operation.**

TIP Please close the cover of the storage tank completely.
Ants or other substances might get inside.



- TIP** When cleaning storage tank do not use chemicals or detergents.

When the chemicals and detergents are not washed out completely it may be harmful to health.



- Please always keep environment clean and clean the storage tank once every two months.

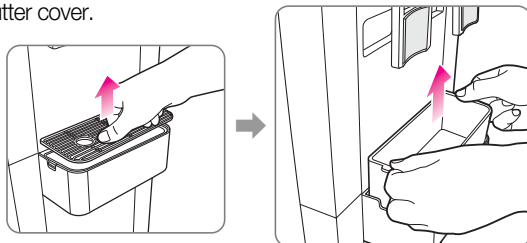


CLEANING METHOD

► Gutter

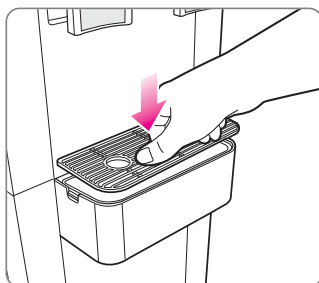
1 Separating the gutter

It is easily disassembled by holding the gutter after removing the gutter cover.



2 Installing the gutter

After adhering the gutter closely to the front side of the product and slightly raise the gutter cover.



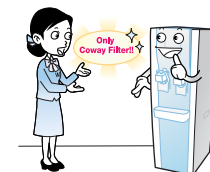
FILTER REPLACEMENT AND DAILY CHECK



► Filter Replacement

■ Filter

The vitality of product is the filter. The fraudulent filters or missing time for filter change may degrade the performance and so interrupt the filtration.

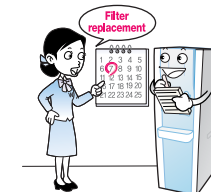


■ Estimated Time of Filter Replacement

If the filter is not regularly replaced, it may degrade the water quality from the product. The filter change cycle may vary within the range of expected replacement cycle depending on the feed water quality.

※ The period for the filter exchange is made based on 10ℓ use in a day for house use (4 people based) and 20ℓ use for business.

Part No.	Names of Filter	Usable Period
WJNF14	Neo-sense filter	6 months
WJMF14-75	Membrane filter(CHP-06ER)	24 months
WJMF14S-50	Membrane filter(CHP-06EL)	24 months
WJCF14-POST	Fine post-carbon filter	18 months
WJCC-02	Ceramic filter	12 months



- This reverse osmosis system contains a replacement component critical to the efficiency of the system. Replacement of the reverse osmosis component should be one with identical specifications, as defined by the manufacturer, to assure the same efficiency and contaminant reduction performance.
- This reverse osmosis system contains a replacement treatment component critical for the effective reduction of total dissolved solids, and that the product water shall be tested periodically to verify that the system is performing properly.

■ About Estimated Time of Filter Replacement

The filter change cycle described above is not the filter quality warranty period but the expected cycle that the filter shows its original performance. (based on the tap water.)

※ The filter change cycle may be reduced for the areas with poor water quality or more applications.



The product water should be tested every 6 months to ensure that the contaminants are being reduced effectively. Please contact your local dealer or Coway to initiate this service.



FILTER REPLACEMENT AND DAILY CHECK

► Regular Check

For safe operation, we recommend the frequent check on the product. Keep the optimum status of the product by frequent check for the following items.

■ Power

- Does the indication part repeat ON and OFF when you touch the power cord When the power is connected?
- Is a part of power cord hotter than usual?
- Is a part of power cord distorted, discolored or damaged?

▲ For any event above, immediately stop the operation and contact your nearest Coway Customer Service Center.

■ Indication Part

- Does any lamp on the indication part abnormally flicker?

For the abnormal flickering of lamp, immediately Contact your nearest Coway Customer Service Center.



BEFORE ASKING A/S



► Check the followings before asking A/S.

The product may not properly work due to the reasons except the breakdown because you are not accustomed to how to operate or any negligible reasons. In those cases, check the followings, and you can solve the simple troubles without the help from the customer service center. If the trouble continues after you check the followings, contact your nearest Customer Service Center.

Problem	Check Items	Solutions
The water tastes weird	• Did you clean the water drum?	Clean the water drum.
	• Did you use the filter system for too long?	Remove the stored water and clean the water drum.
	• Is it about time to change the filter?	Request filter change.
The water is flowing slower.	• Is it about time to change the filter?	Request filter change.
	• Did you lock the water supply valve?	Open the water supply valve.
	• Did the temperature of the water drop suddenly?	When the temperature drops, the amount of water filtered decreases.
There is no cold water.	• Is the cold water lamp on?	Turn the cold water mode on by pressing the cold water button for 3 seconds
	• The cooling system may be malfunctioning.	Request A/S.
	• Is the power turned on?	Connect the power to the voltage rating that matches it on the rating plate.
	• Did you close the water supply valve?	If the water level is low, the cold water function does not activate, to protect the electronic motor. Open the water supply valve.
There is no hot water	• Is the hot water lock lamp on?	Deactivate hot water.
	• Is the hot water lamp on?	Turn the cold water mode on by pressing the cold water button for 3 seconds.
	• Is the power connected?	Connect the power to the voltage rating that matches it on the rating plate.
	• Is room-temperature water overflowing or leaking?	Request A/S.



BEFORE ASKING A/S

► Check the followings before asking A/S.

Problem	Check Items	Solutions
Water does not come out, or the fixed quantity has changed	• Is it about time to change the filter?	Request filter change.
	• Is the water supply valve closed, or the water supply cut?	Open the water supply valve.
	• Is the hose bent?	Straighten the hose.
	• Is the water inlet hose too long?	Shorten the water inlet hose to 5m or less.
All functions suddenly stop during operation.	• Is the water being supplied properly?	Check the water supply valve.
	• Is the power turned on?	Connect the power to the voltage rating that matches it on the rating plate.
	• Is room-temperature water overflowing or leaking?	Request A/S.
There is leakage.	• Is water leaking from the water drum cover or from inside the product?	Open the top cover and check. Close the water supply valve and request A/S.

 A/S Phone No : 213-480-1600



SPECIFICATION



Product	Coway Water Filtration system	
Model	CHP-06ER	CHP-06EL
Filtration Method	Reverse Osmosis	
Power Supply	Voltage rating that matches it on the rating plate.	
Tank capacity	Room water	1.6 gal
	Cold water	0.8 gal
	Hot water	0.5 gal
	Total water	2.9 gal
Dimension	260(W) x 448(D) x 1,150(H)mm <10.2(W) x 17.6(D) x 45.3(H)inch>	
Net Weight	0.07-0.82MPa(10-120psi)	0.14-0.82MPa(20-120psi)
Working Pressure	0.14-0.83MPa(20-120psi)	
Working Temperature	41-95°F (5-35°C)	
Production Rate	75gal/day	50gal/day

※ Without any prior notice, all or parts of the product are subject to change for the purpose of improving the performance of the product.

※ Efficiency rating means the percentage of the influent water to the system that is available to the user as reverse osmosis treated water under operating conditions that approximate typical daily usage.

※ Recovery rating means the percentage of the influent water to the membrane portion of the system that is available to the user as reverse osmosis treated water when the system is operated without a storage tank or when the storage tank is by passed.



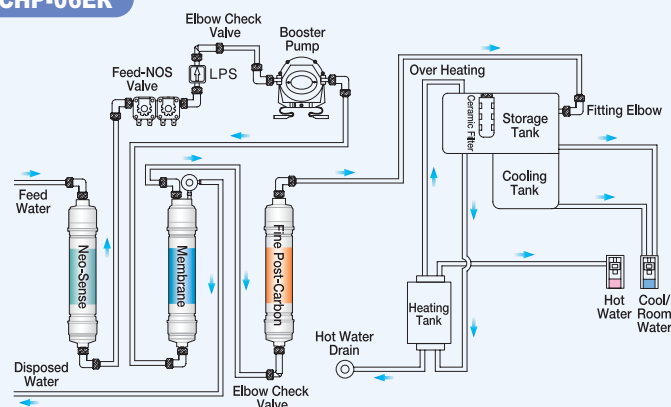
WATER FLOW DIAGRAM



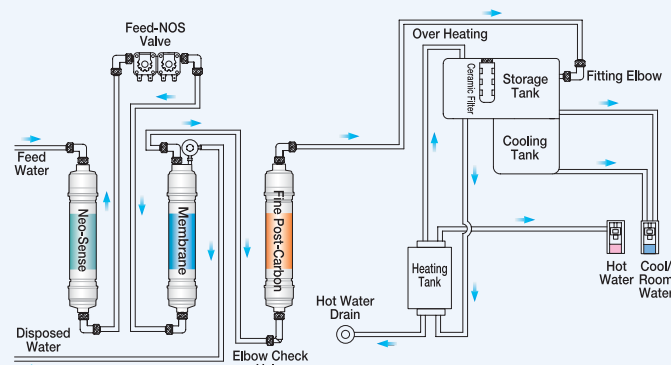
WARRANTY INFORMATION



► CHP-06ER



► CHP-06EL



Coway

Product Guarantee

1. Parts and components shall be replaced free of charge within the guarantee period if the defects occur due to manufacturing defects in normal operation.
2. Contact us in case of breakdown.
3. In the following cases, repair work shall be charged even within the guarantee period.
 - Breakdown caused by careless operation or unreasonable repair and renovation.
 - Breakdown caused by nonperformance of the instructions specified in the manual.
4. Even after the expiration of guarantee period, it is possible to apply for charged repair.
5. Present this Letter of Guarantee whenever repair is needed.
6. This Letter of Guarantee is valid only in domestic where you buy this product.
7. Keep this Guarantee carefully as it is not re-issued.

Model	CHP-06ER/L	Guarantee Period
Serial No.		1 year
Date of Purchase		
Guarantee Period	From	To
Customer's Address		
Customer's Name	Tel.	

Please contact our customer's service center in case you are not satisfied with our A/S service.

USA
Add : WOONGJIN COWAY USA, INC. 695 SOUTH VERMONT, STE. 110 (SOUTH TOWER) LOSANGELES, CA 90005, USA
Call Center : (213) 386-9900 / (213) 480-1600
FAX : (213) 386-3990

☞ In case any other filters or parts which are not genuine products of we are used, we is not responsible for any problems related to water quality.

Coway Co., Ltd
658, Yugu-Ri, Yugu-Eub, Gongju-Si, Choongchungnam-Do, Korea
Tel : 82-41-850-7879 Fax : 82-41-841-7816
www.coway.com



MEMO



.....

.....

.....

.....

.....

.....

.....

.....

.....

.....

.....

.....

.....

.....

.....

.....

.....

.....

.....

.....

.....

.....

.....

.....

.....

.....

.....

.....

.....

.....

.....

.....

.....

.....

.....

.....

.....

.....

.....

.....

.....